



Analysis of Faculty Satisfaction Survey

Deanship of Quality Assurance, Institutional Effectiveness and Accreditation

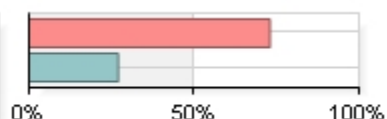
University Level

Academic Year 2017-2018

Raters	FacultyMembers
Responded	408
Invited	638
Response Ratio	63.95%

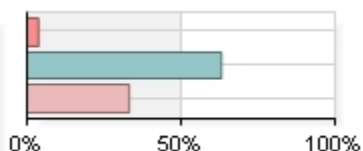
Gender

Male	297	72.97%
Female	110	27.03%
Total	407	



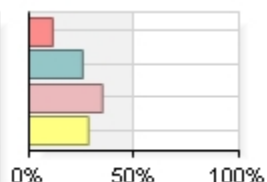
Nationality

UAE	15	3.69%
Arab	257	63.14%
Non-Arab	135	33.17%
Total	407	



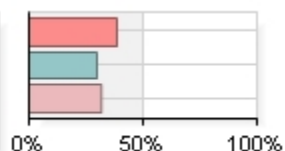
Academic Rank

Professor	46	11.30%
Associate Professor	104	25.55%
Assistant Professor	142	34.89%
Lecturer	115	28.26%
Total	407	



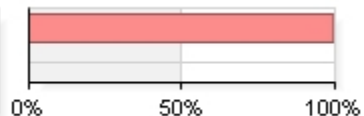
Years of employment at UoS

1-3 years	157	38.57%
4-8 years	121	29.73%
More than 8 years	129	31.70%
Total	407	



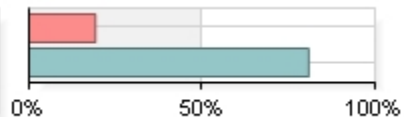
Contract Type

Full-Time	405	99.51%
Part-Time	2	0.49%
Total	407	



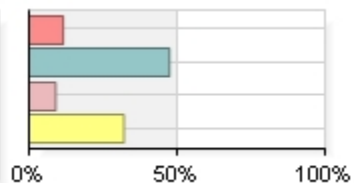
Are you currently in an administrative position (e.g. Dean, Chair, etc.)

1 Yes	78	19.16%
2 No	329	80.84%
Total	407	



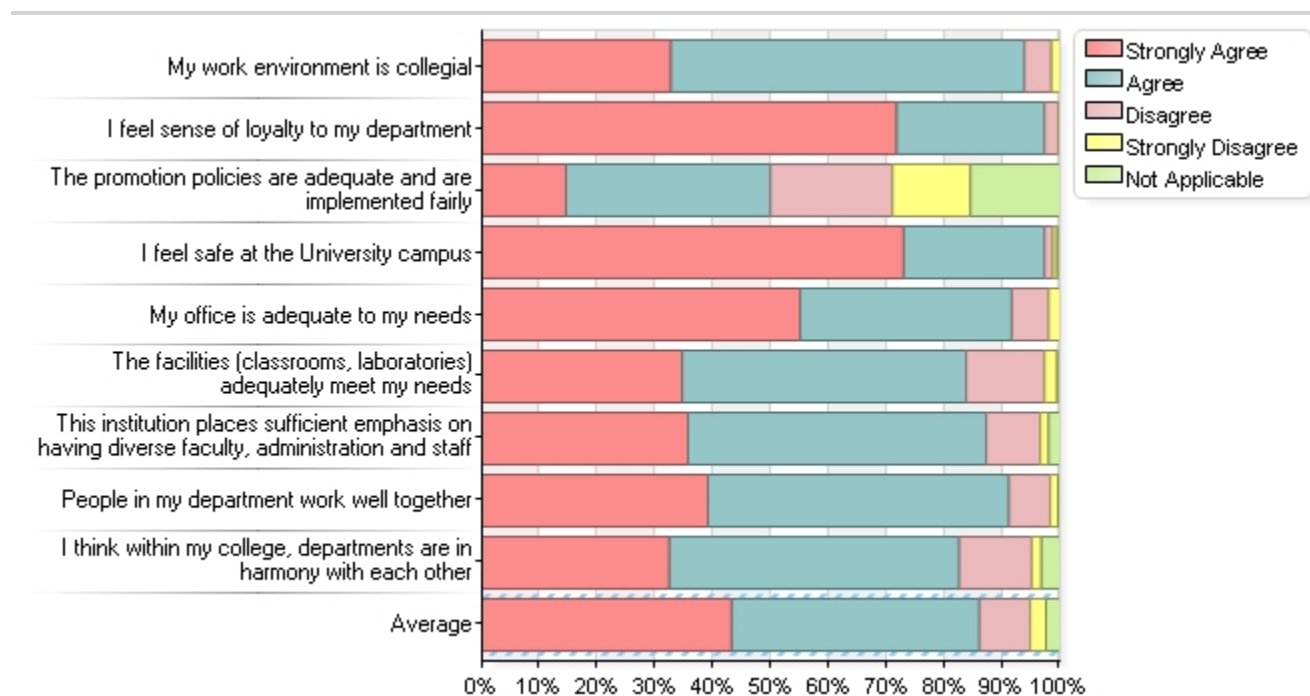
Please specify

Dean	9	11.54%
Chairperson	37	47.44%
Director	7	8.97%
Others	25	32.05%
Total	78	



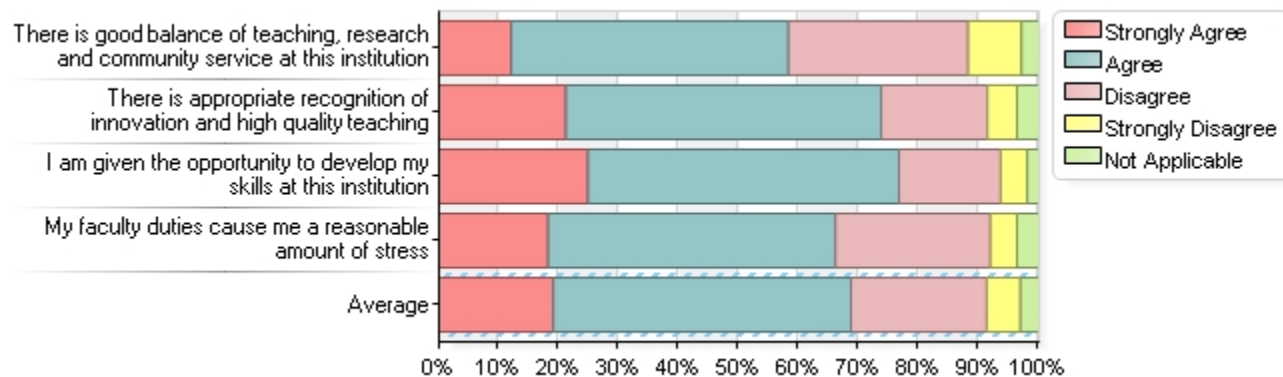
WORK ENVIRONMENT

Question	Strongly Agree	Agree	Disagree	Strongly Disagree	Not Applicable
My work environment is collegial	32.68%	61.18%	4.67%	1.47%	0.00%
I feel sense of loyalty to my department	71.74%	25.55%	2.46%	0.25%	0.00%
The promotion policies are adequate and are implemented fairly	14.50%	35.38%	21.13%	13.51%	15.48%
I feel safe at the University campus	72.97%	24.32%	1.47%	0.74%	0.49%
My office is adequate to my needs	55.04%	36.61%	6.39%	1.97%	0.00%
The facilities (classrooms, laboratories) adequately meet my needs	34.64%	49.14%	13.51%	2.21%	0.49%
This institution places sufficient emphasis on having diverse faculty, administration and staff	35.63%	51.60%	9.34%	1.47%	1.97%
People in my department work well together	39.07%	52.09%	7.13%	1.47%	0.25%
I think within my college, departments are in harmony with each other	32.43%	50.12%	12.53%	1.72%	3.19%



TEACHING AND SCHOLARSHIP

Question	Strongly Agree	Agree	Disagree	Strongly Disagree	Not Applicable
There is good balance of teaching, research and community service at this institution	12.04%	46.19%	29.98%	8.85%	2.95%
There is appropriate recognition of innovation and high quality teaching	21.13%	52.58%	17.69%	4.91%	3.69%
I am given the opportunity to develop my skills at this institution	24.82%	51.84%	16.95%	4.42%	1.97%
My faculty duties cause me a reasonable amount of stress	18.18%	47.91%	25.80%	4.42%	3.69%



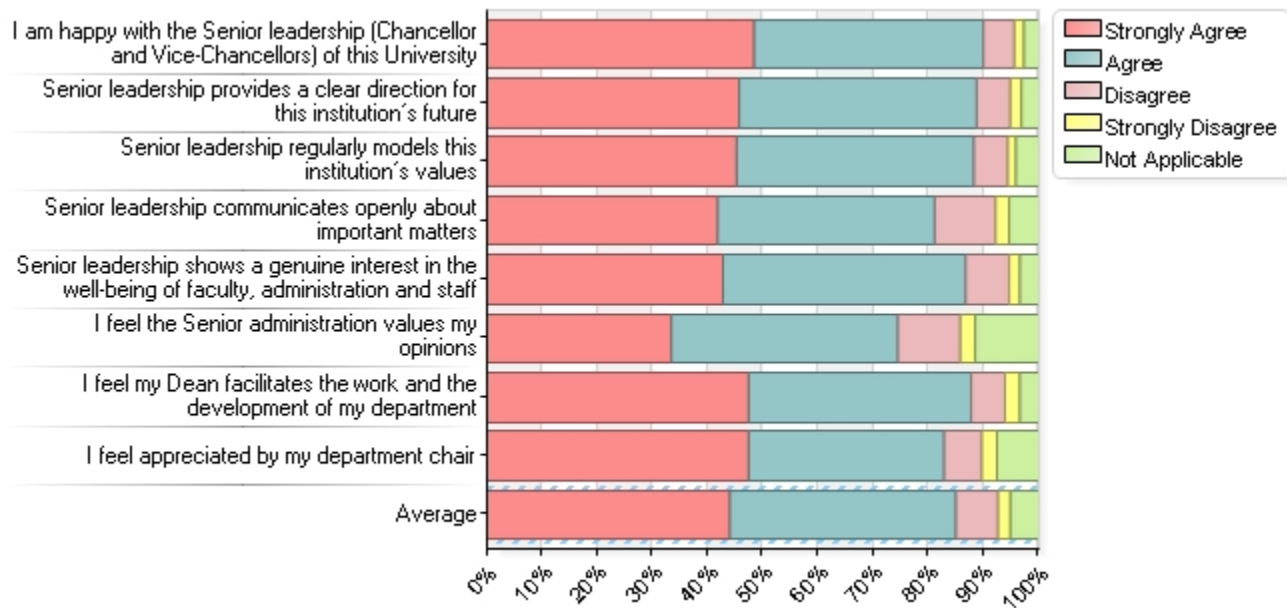
ACADEMIC AND ADMINISTRATIVE SERVICES

Question	Strongly Agree	Agree	Disagree	Strongly Disagree	Not Applicable
I am satisfied with the services of the Human Resources Department	27.27%	57.25%	9.09%	3.44%	2.95%
I am satisfied with the services of the Financial Department	28.50%	52.58%	10.81%	4.91%	3.19%
I am satisfied with the services of the Purchasing department	15.97%	39.31%	14.74%	9.09%	20.88%
I am satisfied with the services of the admission department	25.80%	46.68%	3.19%	0.98%	23.34%
I am satisfied with the services of the registration department	27.03%	50.12%	5.90%	1.23%	15.72%
I am satisfied with the health services	17.69%	55.28%	15.72%	5.16%	6.14%
I am satisfied with the library services	42.51%	46.44%	5.90%	0.74%	4.42%
I am satisfied with the laboratory services	20.15%	45.70%	3.93%	0.74%	29.48%
I am satisfied with the IT services	29.48%	57.74%	9.34%	2.46%	0.98%
I am satisfied with the Physical plant services	27.27%	53.32%	8.60%	5.90%	4.91%
I am satisfied with the services of the Deanship of Quality Assurance, Institutional Effectiveness and Accreditation	32.43%	51.35%	7.62%	2.21%	6.39%
I am satisfied with the sports facilities	28.75%	46.19%	10.32%	2.70%	12.04%
I am satisfied with the food services on campus	10.57%	36.12%	25.55%	12.04%	15.72%
Parking lots are enough, well lighted and safe	17.94%	32.68%	27.27%	19.41%	2.70%
The university campus is spacious and beautiful	73.46%	25.80%	0.25%	0.49%	0.00%



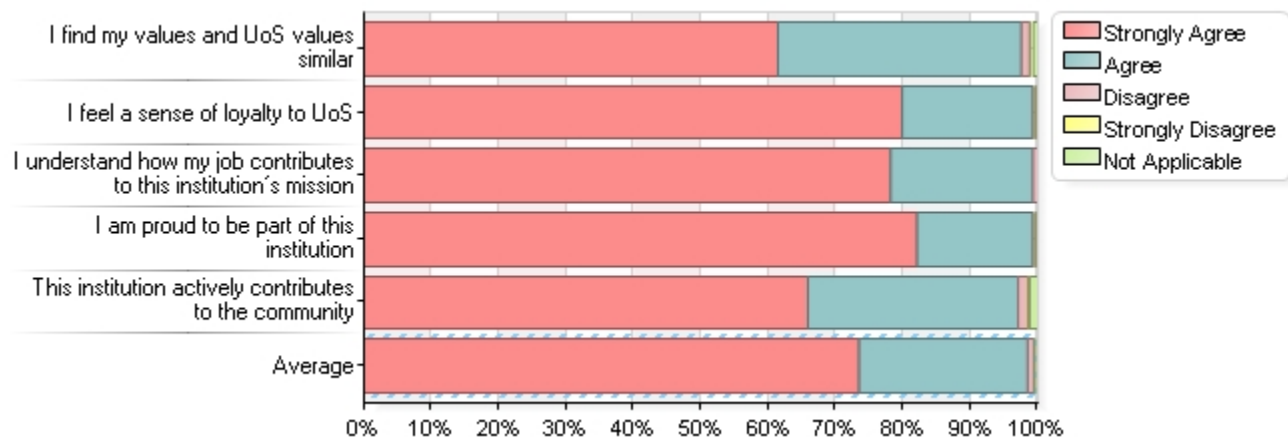
ADMINISTRATION AND LEADERSHIP

Question	Strongly Agree	Agree	Disagree	Strongly Disagree	Not Applicable
I am happy with the Senior leadership (Chancellor and Vice-Chancellors) of this University	48.40%	41.52%	5.65%	1.72%	2.70%
Senior leadership provides a clear direction for this institution's future	45.70%	43.00%	6.14%	1.97%	3.19%
Senior leadership regularly models this institution's values	45.21%	43.00%	6.14%	1.47%	4.18%
Senior leadership communicates openly about important matters	41.77%	39.31%	11.06%	2.46%	5.41%
Senior leadership shows a genuine interest in the well-being of faculty, administration and staff	42.75%	43.98%	7.86%	1.97%	3.44%
I feel the Senior administration values my opinions	33.42%	41.03%	11.30%	2.70%	11.55%
I feel my Dean facilitates the work and the development of my department	47.42%	40.29%	6.14%	2.70%	3.44%
I feel appreciated by my department chair	47.42%	35.38%	6.88%	2.70%	7.62%



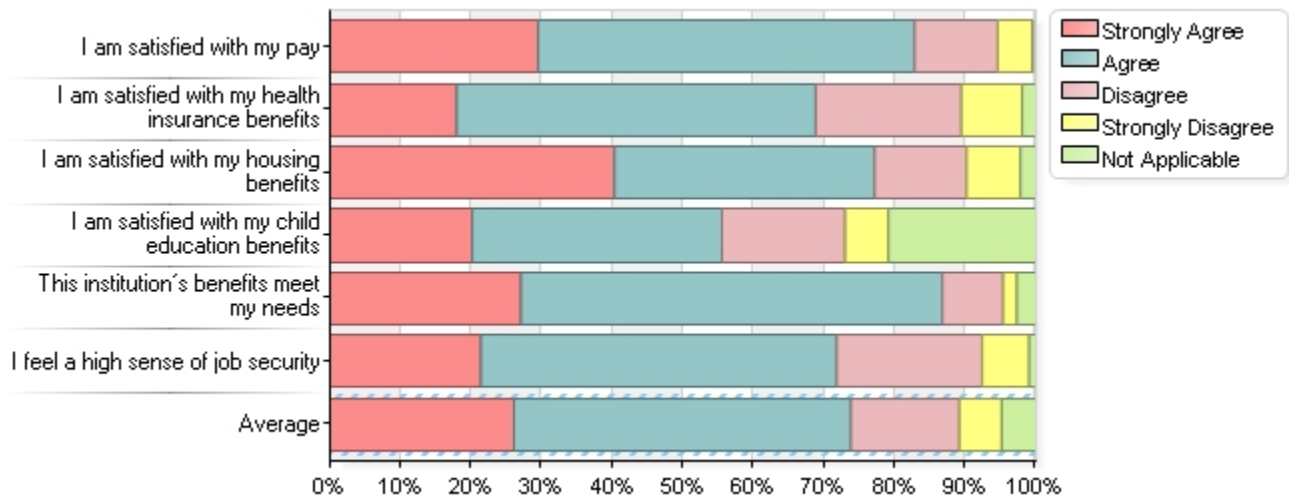
ENGAGEMENT & PRIDE

Question	Strongly Agree	Agree	Disagree	Strongly Disagree	Not Applicable
I find my values and UoS values similar	61.43%	36.12%	1.23%	0.49%	0.74%
I feel a sense of loyalty to UoS	79.85%	19.41%	0.49%	0.00%	0.25%
I understand how my job contributes to this institution's mission	78.13%	21.13%	0.74%	0.00%	0.00%
I am proud to be part of this institution	82.06%	17.20%	0.49%	0.00%	0.25%
This institution actively contributes to the community	65.85%	31.20%	1.47%	0.25%	1.23%



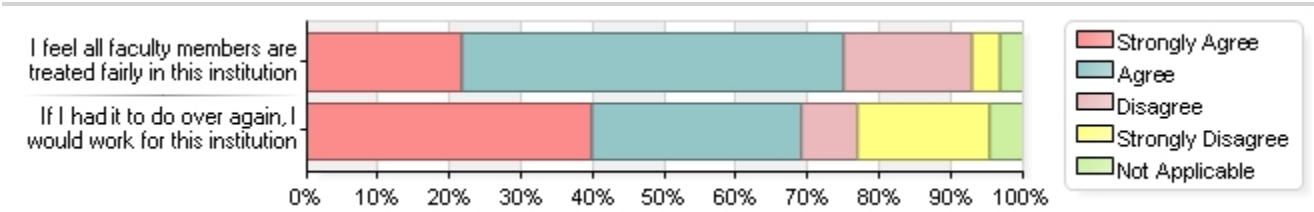
COMPENSATION & BENEFITS

Question	Strongly Agree	Agree	Disagree	Strongly Disagree	Not Applicable
I am satisfied with my pay	29.48%	53.32%	11.79%	4.91%	0.49%
I am satisfied with my health insurance benefits	17.94%	50.86%	20.64%	8.60%	1.97%
I am satisfied with my housing benefits	40.29%	36.86%	13.02%	7.62%	2.21%
I am satisfied with my child education benefits	20.15%	35.38%	17.44%	6.14%	20.88%
This institution's benefits meet my needs	27.03%	59.71%	8.60%	1.97%	2.70%
I feel a high sense of job security	21.38%	50.37%	20.64%	6.63%	0.98%



GENERAL

Question	Strongly Agree	Agree	Disagree	Strongly Disagree	Not Applicable
I feel all faculty members are treated fairly in this institution	21.62%	53.32%	17.94%	3.93%	3.19%
If I had it to do over again, I would work for this institution	39.80%	29.24%	7.86%	18.43%	4.67%



OVERALL

Question	Strongly Agree	Agree	Disagree	Strongly Disagree	Not Applicable
Overall, I am satisfied with the University of Sharjah	54.55%	42.26%	2.46%	0.00%	0.74%

